



BOSS PRODUCTS
A Division of Northern Star Industries, Inc.
P.O. Box 787 Iron Mountain MI 49801-0787
www.bosspow.com

V-XT & DXT BLADE WING EXTENSION KIT INSTALLATION INSTRUCTIONS

Kit Number:
MSC08063B

Covering Plows:

Power V-XT
Power V-DXT

WARNING

Serious injury or death can result if you do not follow these instructions and procedures which are outlined further within your owner's manual

- ALWAYS detach wing extensions before transporting plow.
- DO NOT under any circumstances disable or remove or relocate any sensors or other components related to the operation of the air bags.
- Always follow the vehicle manufacturer's recommendations relating to snowplow installation. For recommended vehicle models refer to the Boss Snowplow Application Chart and Selection Guide.
- Vehicles equipped with air bags are designed such that the air bags will be activated in a frontal collision equivalent to hitting a solid barrier (such as a wall) at approximately 14 mph or more, or, roughly speaking, a frontal perpendicular collision with a parked car or truck of similar size at approximately 28 mph or more. Careless or high speed driving while plowing snow, which results in vehicle decelerations equivalent to or greater than the air bag deployment threshold described above, would deploy the air bag.
- Read this manual carefully before using wing extensions.
- Keep all body parts away from mating areas when attaching and detaching wing extensions.
- When transporting, position plow so as not to block vision or plow headlights.
- DO NOT change blade position when traveling.
- DO NOT exceed 40 mph when transporting plow.
- DO NOT exceed 14 mph when plowing.
- Always lower blade when vehicle is not in use.
- Make sure plow is properly attached before moving vehicle.

V-XT & DXT Wing Extension Installation Procedure

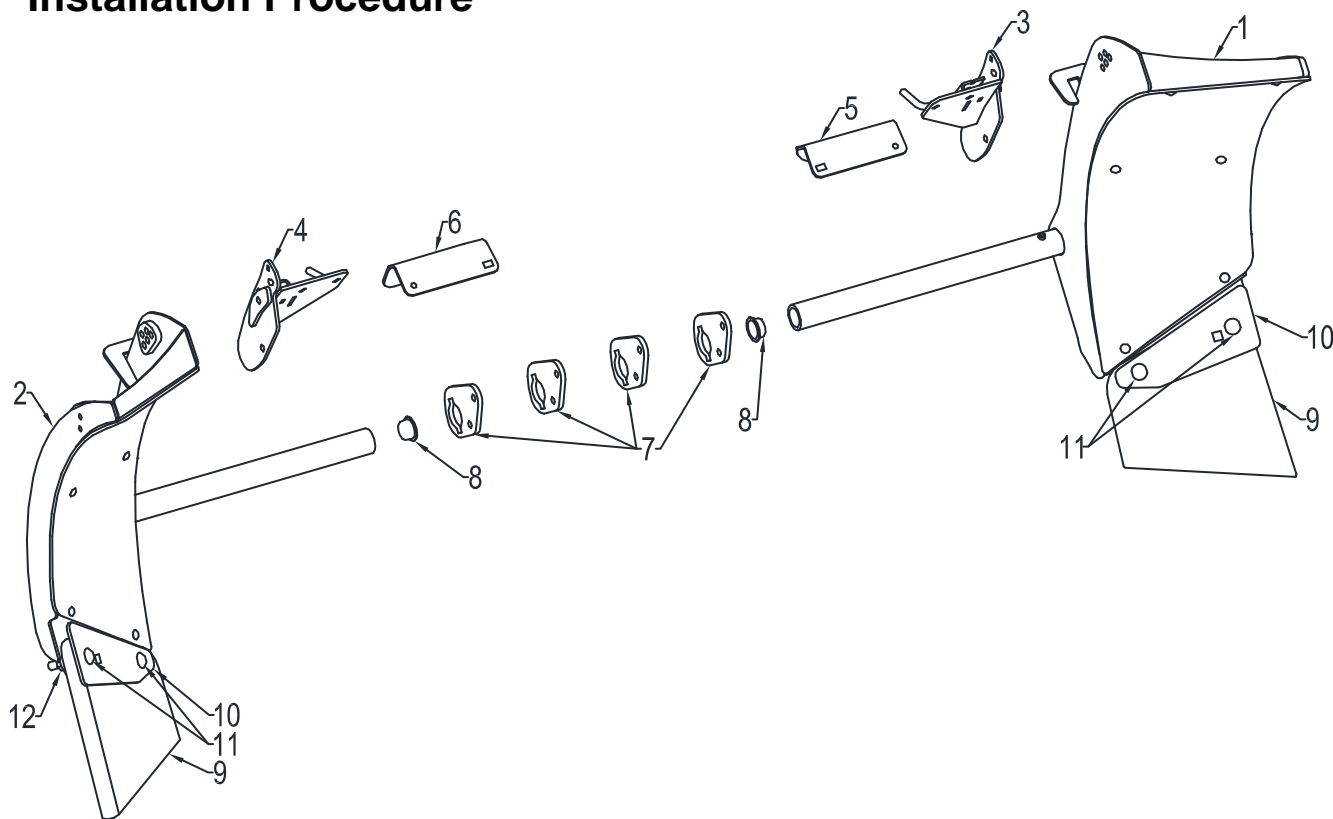


Figure 1. V-XT & DXT Wing Extension Parts **G10572**

ITEM #	QTY.	PART #	DESCRIPTION
1	1	BAL08052	DRIVER SIDE WING W/ POLY SKIN
2	1	BAR08062	PASSENGER SIDE WING W/ POLY SKIN
3	1	BAL09900	DRIVER SIDE SPRING PIN BRACKET
4	1	BAR09901	PASSENGER SIDE SPRING PIN BRACKET
5	1	BAL08061	DRIVER SIDE SPRING PIN BASE PLATE
6	1	BAR08065	PASSENGER SIDE SPRING PIN BASE PLATE
7	4	BAX08035	PLOW RIB BRACKET
8	2	MSC08040	TUBE PLUG
9	2	BAX08057	UNIVERSAL CUTTING EDGE

ITEM #	QTY.	PART #	DESCRIPTION
10	2	BAX08031	EDGE MOUNTING PLATE
11	4	HDW02766	5/8"-11 X 3-1/2" CARRIAGE BOLT
12	4	HDW01709	5/8"-11 NYLON LOCK NUT
13	14	HDW01728	1/2"-13 X 1-1/2" HEX HEAD BOLT
14	4	HDW01729	1/2" FLAT WASHER
15	14	HDW01748	1/2"-13 NYLON LOCK NUT
16	2	HDW08069	3/8"-16 X 1-1/2" BUTTON HEAD BOLT
18	2	HDW05576	3/8"-16 X 1-1/4" CARRIAGE BOLT
19	4	HDW01720	3/8"-16 NYLON LOCK NUT

V-XT & DXT Wing Extension Kit Installation Procedure

Note: This instruction manual is to be used for the installation of XT/DXT wing extension Kit **MSC08063B**.

- 1) Place plow in storage position detached from vehicle with coupler tower rotated forward.
- 2) On the driver side of plow, measure, mark, and drill two 7/16" diameter holes in blade top. See Figure 7.
- 3) For older XT applications refer to Figure 6 for drilled rib hole reference measurements.
- 4) Mount driver side spring bracket (3) to plow using one 1/2"-13 X 1-1/2" hex head bolt (13), one 1/2"-13 nylon lock nut (15) and to the spring bracket base plate (5) using two 1/2"-13 X 1-1/2" hex head bolts (13), two 1/2" flat washers (14) and two 1/2"-13 nylon lock nuts (15).
- 5) Mount the driver side spring bracket base plate (5) to plow using one 3/8"-16 X 1-1/4" Carriage Bolt (18), one 3/8"-16 X 1-1/4" button head bolt (16) and two 3/8"-16 nylon lock nuts (19). Do not tighten fasteners.

Note: Use 3/8" flat washers to shim between driver side spring pin bracket base plate (5) and the top of the blade if necessary.

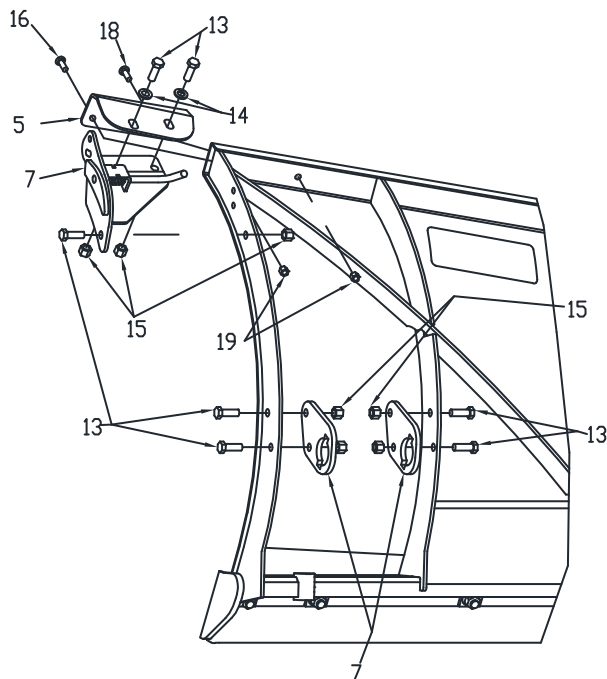


Figure 2. Mount Bracket Locations

G10573

- 6) Pull back on the spring pin and rotate upward into lock position.
- 7) Bolt plow rib bracket (7) to inside of the outside plow rib. See Figure 2. Do not tighten fasteners.
- 8) Bolt second plow rib bracket (7) to the outside of the intermediate rib. See Figure 2. Do not tighten fasteners.
- 9) Insert Driver Side Blade Wing (1) into plow rib Brackets (7). See Figure 3.
- 10) Slide the driver side wing (1) in until the attach pin passes through first plow rib bracket (7). See Figure 3.
- 11) Rotate the driver side wing (1) until the profile lines up with moldboard. Engage the spring pin through the hole corresponding to the plow type. See Figure 4. Position the driver side wing (1) so the inside rib is parallel with the outside plow rib and the universal cutting edge (9) is contacting ground. Tighten all fasteners.
- 12) Adjust the universal cutting edge (9) as necessary. See Figure 5.

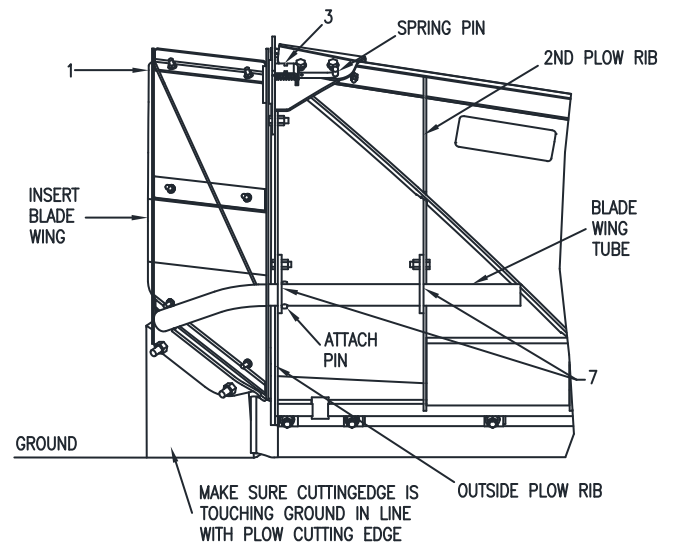


Figure 3. V-XT & DXT Wing Extension Assembly G10574

- 13) Attach and detach the driver side wing (1) several times to ensure proper fit
- 14) Make sure all fasteners are tightened. **DO NOT OVER TIGHTEN**. See guide to recommended assembly torque located in this manual (Figure 9). It is important that all fasteners be properly torqued to assure a safe operating plow. Re-tighten all fasteners after 2 hours of plowing.

V-XT & DXT Wing Extension Kit Installation Procedure

15) Repeat steps 2-14 for Passenger Side.

16) Attach plow to truck. Make sure plow sits level and all cutting edges are contacting ground.

17) **This step is optional.** After installation is complete, the wing extension tube can be shortened by marking and cutting end of tube to 1/2" beyond inside of second plow rib bracket (7). Tube plug (8) must be inserted in the end of the wing extension tube following cut to prevent corrosion.

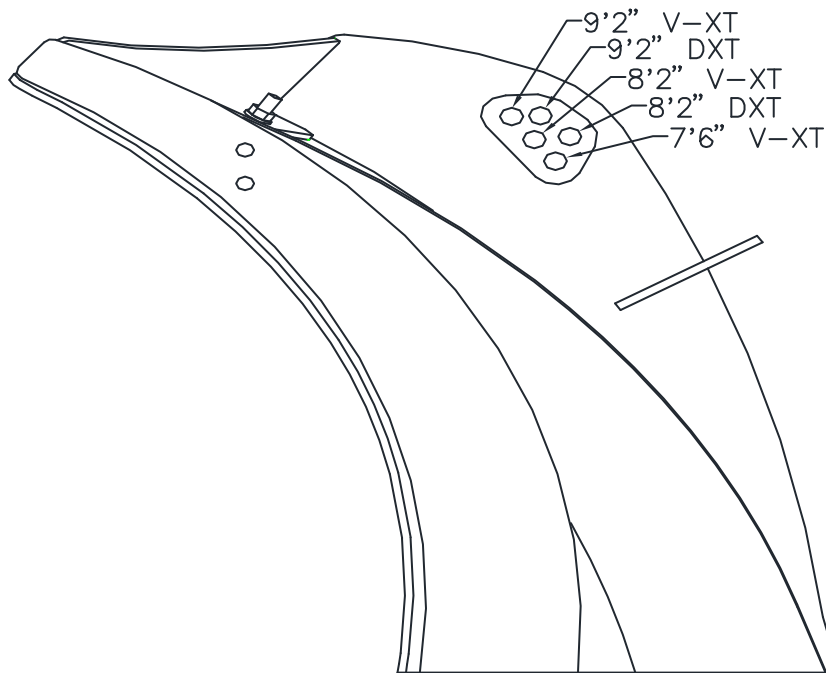


Figure 4. Individual Blade Spring Pin Location

G10576

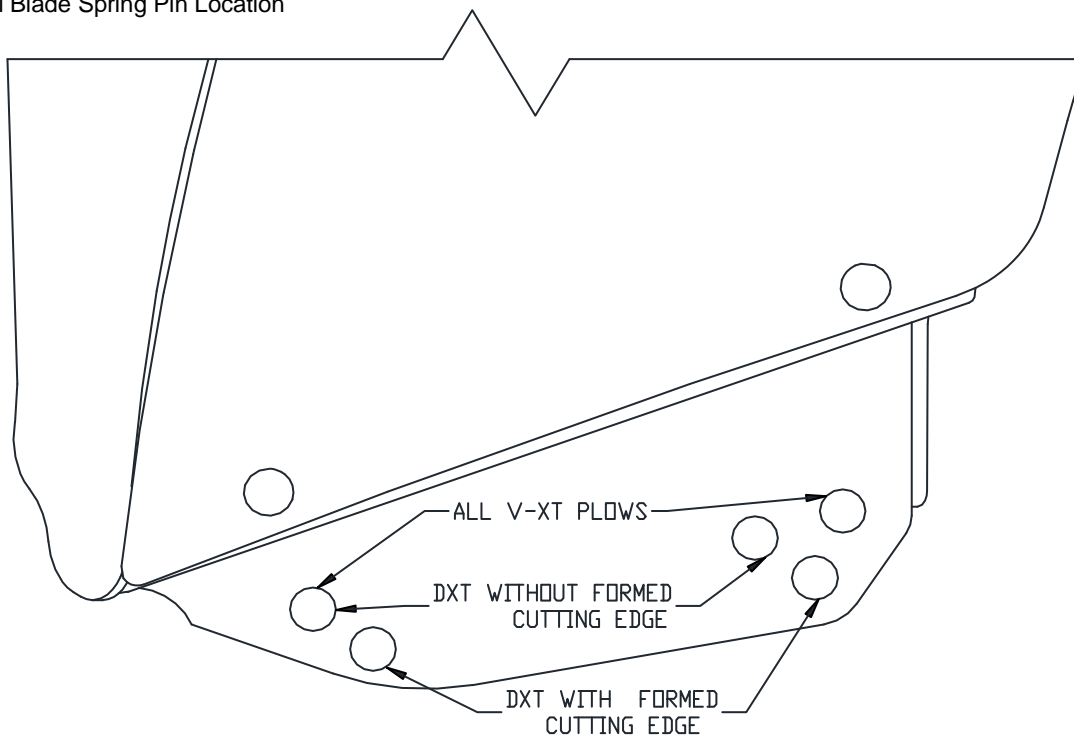
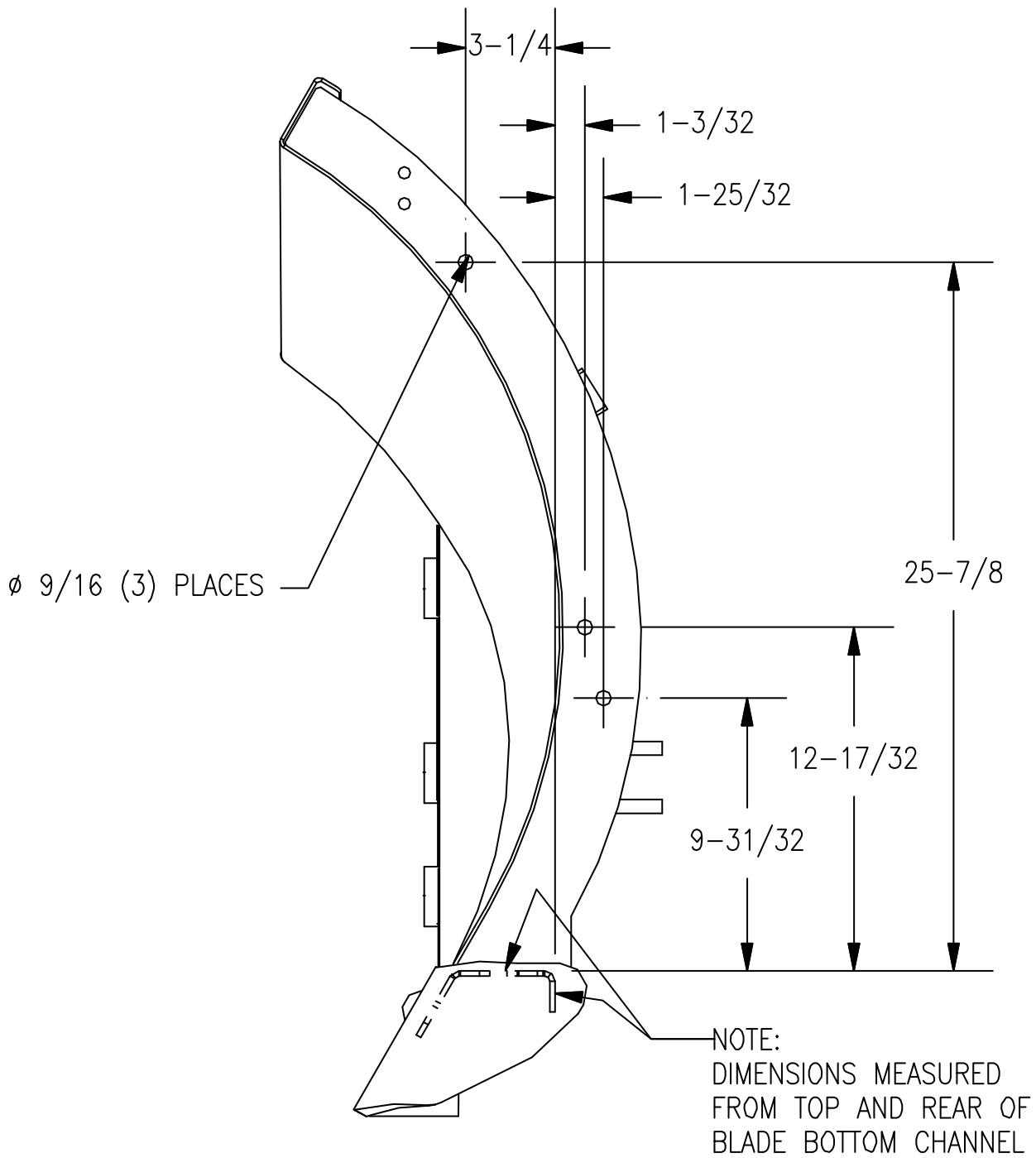


Figure 5. Cutting Edge Adjustment

G10577

REFERENCE DIMENSIONS ONLY (V-XT ONLY)



PLOW SIZE	TYPE
8'2" AND 9'2" V-XT	STEEL & POLY V-PLOW

Figure 6. Plow Rib Drilled Hole Reference Measurements

V-XT & DXT Wing Extension Kit Installation Procedure

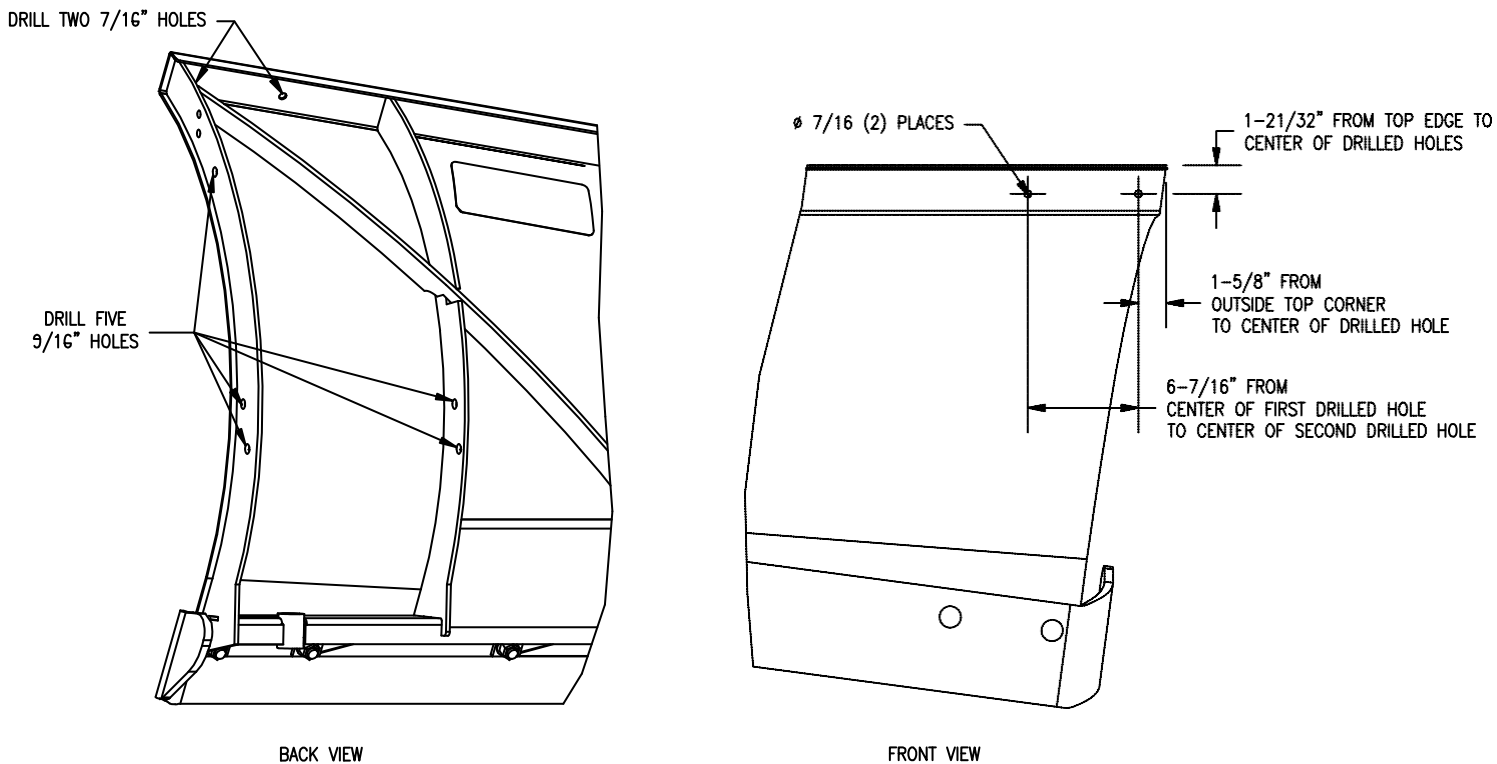


Figure 7. Blade Top Drilled Hole Measurements (INSIDE TOP POLY-V HOLES ARE PRE-CUT)

G10579

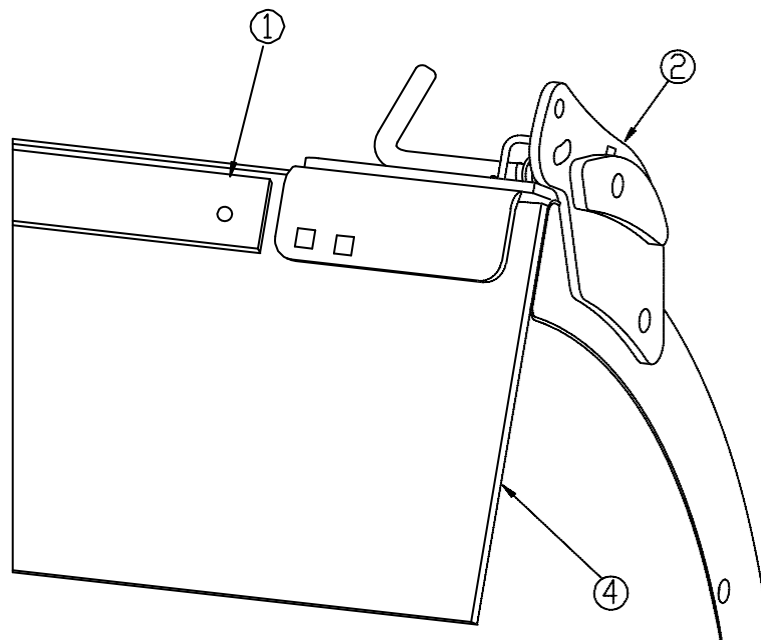


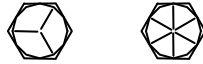
Figure 8. Wing Bracket Installed on Blade

G10614

18) For plows with deflectors installed: Cut end of strap (1) off flush with wing bracket (2). Drill and replace bolt in end of strap (1).

19) Deflector belting (4) must be mounted underneath wing bracket (2).

GUIDE TO RECOMMENDED ASSEMBLY TORQUE



DIAM=I-R / PITCH	GRAD= 5	GRAD= 8	GRAD= 8.8	GRAD= 10.9
1/4-20	6	9		
5/16-18	14	19		
3/8-16	23	33		
7/16-14	38	53		
1/2-13	56	80		
9/16-12	82	116		
5/8-11	113	159		
3/4-10	201	283		
M10 X 1.25			36	
M10 X 1.5				49
M12 X 1.75				71
M14 X 2.0				80

ALL TORQUE VALUES ARE IN FOOT-POUNDS (FT.-LB.)

* The torque values listed above are based on dry, coated bolts, variables such as oil, or other lubrications may appreciably alter these values and must be taken into consideration.

NOTE: IT IS IMPORTANT THAT ALL FASTENERS BE PROPERLY TORQUED TO ASSURE A SAFE OPERATING FLOW.

Figure 9. Recommended Assembly Torque